

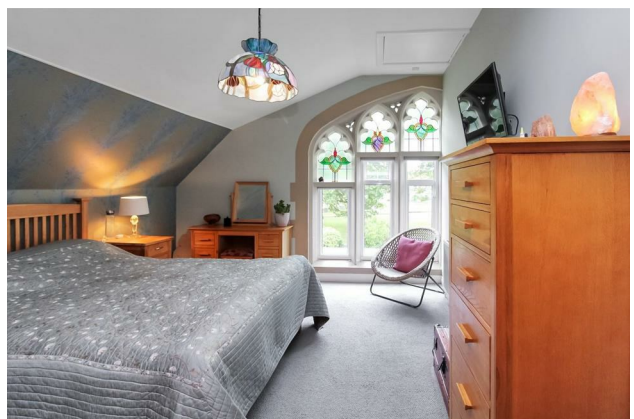
# HUNTERS®

HERE TO GET *you* THERE

**The Old Chapel Sutton Howgrave, Bedale, DL8 2NS**

**Offers In The Region Of £595,950**

**Property Images**





# HUNTERS®

HERE TO GET *you* THERE

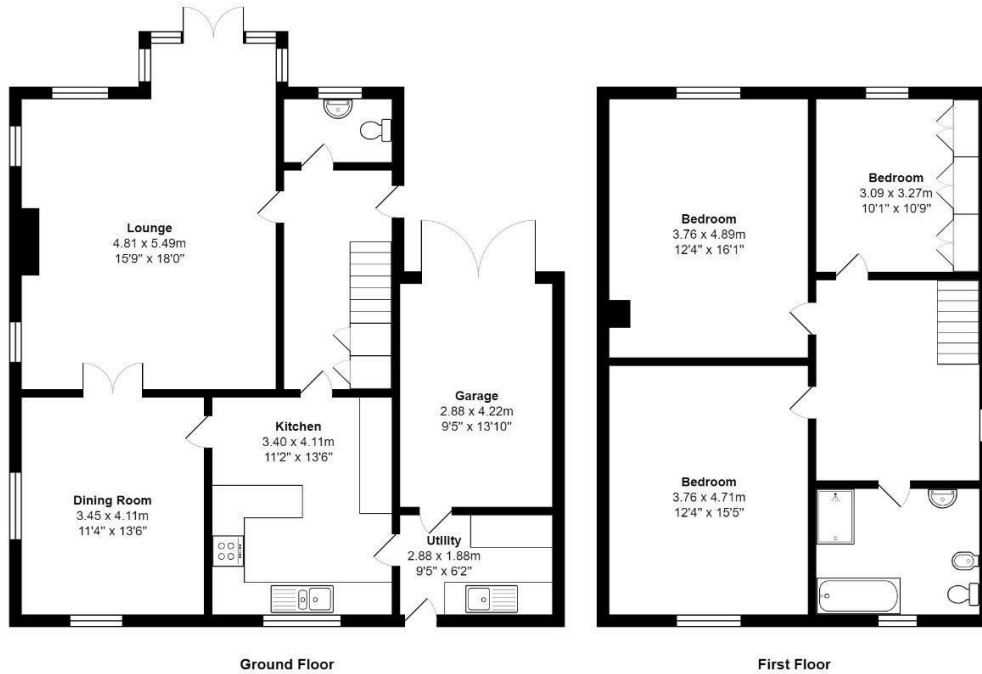
## Property Images



# HUNTERS®

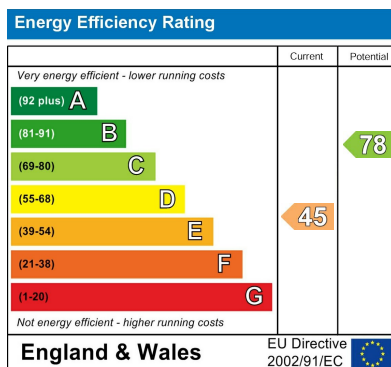
HERE TO GET *you* THERE

## Floorplan



Total Area: 145.0 m<sup>2</sup> ... 1561 ft<sup>2</sup> (excluding garage)  
All measurements are approximate and for display purposes only

## EPC



## Map



## Details

Type: House - Detached Beds: 3 Bathrooms: 1 Reception: 2 Tenure: Freehold



## Summary

A truly stunning three bedroom converted Chapel which offers spacious and contemporary yet traditional accommodation with lovely room sizes throughout, period features, beautifully manicured gardens, single garage, parking for multiple cars all set within this idyllic village.

Comprising: spacious hallway with side entrance with stairs to the first floor, oak flooring and ground floor WC. The lounge is a stunningly elegant room offering a spacious living area with dual aspect arched windows, fitted log burner with stone hearth and double opening doors to the dining room which has oak flooring and dual aspect windows. The kitchen is fitted with modern wall and base units with granite work tops, integrated double oven and dish washer with space for fridge freezer. There is a separate utility room which has space for a washing machine and dryer, houses the boiler and opens to the garden through a stable door.

To the first floor is a beautifully spacious landing area with exposed beams, three double bedrooms, two of which have the stunning shared feature window to the front. The bathroom is fitted with a five piece modern suite with tiled bath, large shower enclosure, WC, wash hand basin and bidet.

To the rear is a beautifully manicured and mature garden with extensive planting, with established borders, lawn sitting area offering a very private retreat and paved patio area. There is a further garden area which has multiple established vegetable patches and fruit trees and greenhouse. There is also a fabulous timber summer house which is insulated has electric and heating and double opening doors that open to the garden, this could be an ideal outside office/hobby room.

To the front is a lawn garden with mature trees and shrubs with parking for multiple vehicles which leads to a single garage/workshop.

Sutton Howgrave, is a picturesque village which is within easy reach of Ripon city, Masham and Bedale.

## Features

• STUNNING CONVERTED CHAPEL • PERIOD FEATURES THROUGHOUT • THREE DOUBE BEDROOMS • TWO RECEPTION ROOMS • STUNNING MATURE GARDEN • SUMMER GARDEN ROOM • UTILITY ROOM AND GROUND FLOOR WC • PARKING FOR MULTIPLE CARS • SINGLE GARAGE • IDYLIC VILLAGE LOCATION